

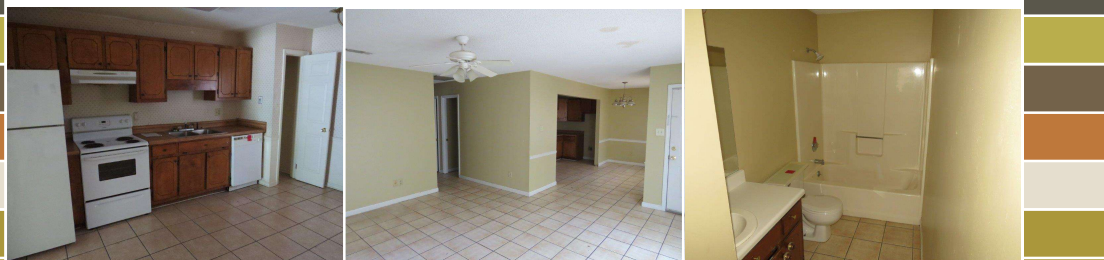
For
SALE

Contact Office for Price

Brick Duplex
Year Built Approx. 1979
6 Total Bedroom(s)
4 Total Bath(s)
Approx. 2,480+/- sq. ft.
Forced Air Heat
Central Air
Ceramic Tile Floors
Lot approx. 0.25 acres
Back Patio
Open Kitchen
Mature Trees

Parcel ID:
0000S/00007/039

2,400+ SF Duplex with Rental History



1917 Elkhorn Ln. | Albany, GA 31707

Features Include: Over 2,400 SF brick duplex with 6 bedrooms/4 baths sitting on 0.25 acres. The interior includes an open kitchen, with ceramic tile flooring. Mature trees and fully landscaped. Rental history available.

Additional Information: This property is just one out of 105 properties being offered for sale resulting from a US Marshals seizure of Christopher Whitman properties. Don't miss the opportunity to build your rental and/or development portfolio from this rare government sale of real estate.



Justin Ochs, VP of National Development | **800-729-6466** | info@soldoncompass.com