

For
SALE

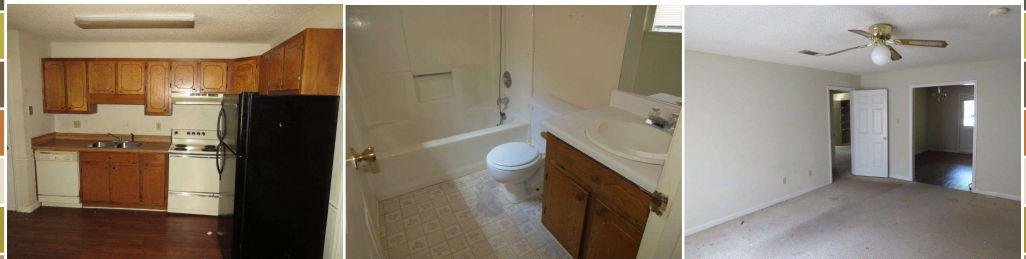
Contact Office for Price

Brick Duplex
Year Built Approx. 1979
6 Total Bedroom(s)
4 Total Bath(s)
Approx. 2,582+/- sq. ft.
Forced Air Heat
Central Air
3 Bed/2 Bath per Unit
Lot approx. 0.25 acres
Back Patio
Open Kitchen
Mature Trees

Parcel ID:

0000S/00007/040

2,500+ SF Duplex with Rental History



1915 Elkhorn Ln. | Albany, GA 31707

Features Include: Over 2,500 SF duplex with 6 bedrooms/4 baths sitting on 0.25 acres. Includes rear access for parking. The interior includes an open kitchen with 3 bed/2 bath per unit. Complete with outdoor patio and open floor plan. Brick exterior with mature trees and fully landscaped.

Additional Information: This property is just one out of 105 properties being offered for sale resulting from a US Marshals seizure of Christopher Whitman properties. Don't miss the opportunity to build your rental and/or development portfolio from this rare government sale of real estate.



Justin Ochs, VP of National Development | [800-729-6466](tel:800-729-6466) | info@soldoncompass.com