

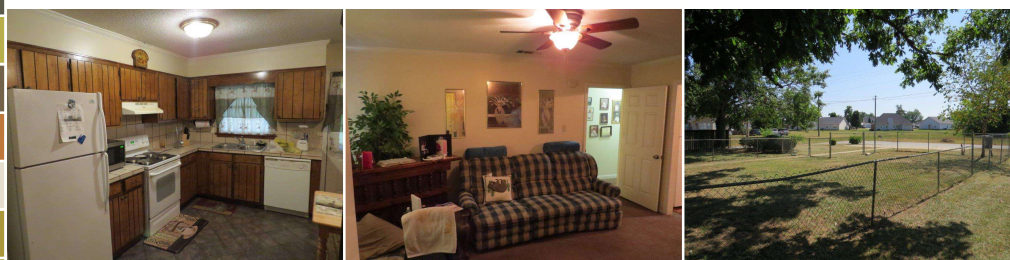
For
SALE

Contact Office for Price

Multi-Family Duplex
Year Built Approx. 1979
6 Total Bedroom(s)
2 Total Bath(s)
2 Half Bath(s)
Approx. 2,622+/- sq. ft.
Forced Air Heat
Air Conditioning
Large Back Yard
Composition Roof
Lot approx. 0.42 acres
Large Closets
Brick Exterior
Fenced Yard

Parcel ID:
0348/00016/001

2,600+ SF Duplex with Rental History



1614 Whisperwood St. | Albany, GA 31721

Features Include: Over 1,300 SF per unit in this brick duplex with large back yard and mature landscaping. 3 bedroom/1.1 bath per unit with large closets. Currently occupied with rental history.

Additional Information: This property is just one out of 105 properties being offered for sale resulting from a US Marshals seizure of Christopher Whitman properties. Don't miss the opportunity to build your rental and/or development portfolio from this rare government sale of real estate.



Justin Ochs, VP of National Development | [800-729-6466](tel:800-729-6466) | info@soldoncompass.com