

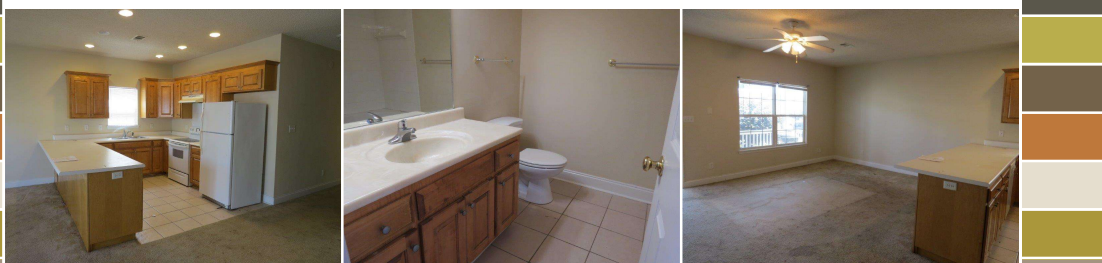
For
SALE

Contact Office for Price

Multi-Family 4-Plex
Year Built Approx. 2003
10 Total Bedroom(s)
8 Total Bath(s)
Approx. 4,823+/- sq. ft.
Forced Air Heat
Air Conditioning
Covered Porches
Composition Roof
Lot approx. 8,775 SF
Vaulted Ceilings
Tile Floors Floors
Walk-In Closets

Parcel ID:
128L243557023

4,800+ SF 4-Plex with Rental History



COMPASS
AUCTIONS & REAL ESTATE
www.SoldonCompass.com

1447 US Hwy 19 | Unit 23 | Leesburg, GA 31763

Features Include: Over 1,200 SF per unit in this massive 4-Plex with tile flooring and vaulted ceilings. 2-3 bedroom/2 bath per unit with covered porches. Currently partially occupied with rental history.

Additional Information: This property is just one out of 105 properties being offered for sale resulting from a US Marshals seizure of Christopher Whitman properties. Don't miss the opportunity to build your rental and/or development portfolio from this rare government sale of real estate.

Justin Ochs, VP of National Development | [800-729-6466](tel:800-729-6466) | info@soldoncompass.com