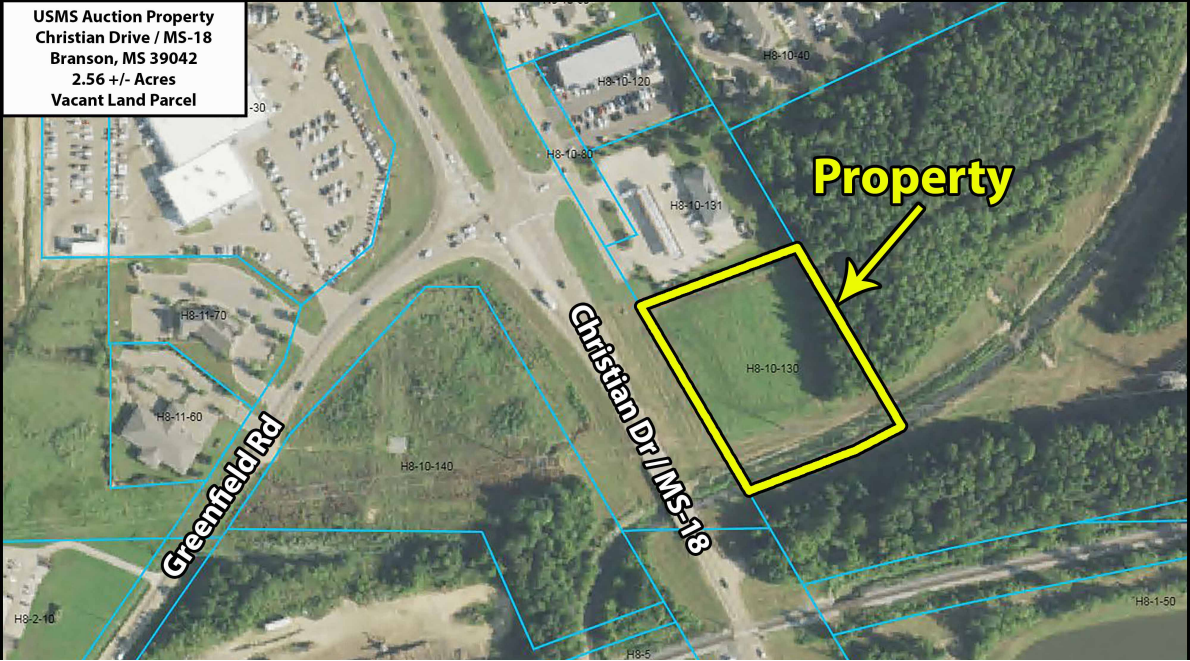


USMS Auction Property  
Christian Drive / MS-18  
Brandon, MS 39042  
2.56 +/- Acres  
Vacant Land Parcel



## CHRISTIAN DR & HWY 18, BRANDON, MS 39042, USA

<https://test.soldoncompass.com>

2.5 +/- commercial acres fronting along busy HWY 18 in Brandon, MS. Adjacent to the subject are a C-store, retail strip center, and an auto dealership is located across the street. There is a Home Depot within a half mile to the north, and an apartment complex just to its north. There are also two large employers located just south of the subject property, Brown...

Christian Dr & HWY 18, Brandon, MS  
39042, USA

- Land/Acreage
- Auction
- Pending



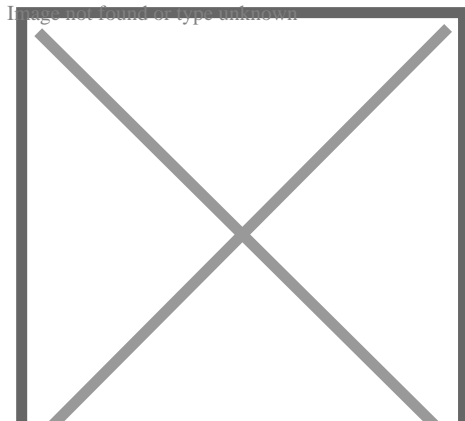
### Justin Ochs

Compass Auctions & Real Estate

📞 800-729-6466

✉️ JOchs@soldoncompass.com

🌐 <http://www.SoldonCompass.com>



---

## BASIC FACTS

**Date added:** 12/21/18

**Type:** Land/Acreage

**Lot size:** 2.5 acres

**Status:** Pending


---

## DOCUMENTS

**Auction Flyer:**  Auction-Flyer-1.pdf

---

## TITLE DOCUMENTS

**Title Report:**  Christian-Dr-Hwy-18-Title-Commitment-01302019.pdf

---

## BIDDING LINK

**AUCTION:** [Bidding Link](#)

---

## REGISTER TO BID

**Registration Link:** [Auction Catalog and Registration](#)

